



2WD Conversion Transmission Mount

Installation

What you need:

- 2 of the original bolts from the torque tube to transmission conn. (M12x1.5x35)
- 10 mm wrench/socket
- Phillips Screwdriver
- 16 mm wrench/socket
- 17mm wrench/socket
- Medium-strength thread locker such as Loctite® 242
- Dremel tool or other device that can be used to cut thick plastic

The installation should take about an hour after the car is in the air.

1. Remove the front transmission cover to expose cross member and front of transmission (4x10mm plastic nuts and 6 screws)
2. Remove the 3 long cross member bolts from LH side
3. Position 2WD Conversion Transmission mount and re-insert bolts. DO NOT TIGHTEN the bolts at this time.
4. Did you tighten the 3 cross member bolts? If you did, please loosen them ☺
5. Your mount came with 4 washers.
 - a. The 2 small washers are inserted between the mount and your transmission
 - b. The large washers sit between the bolt head and the mount
6. Put the larger washers on the bolts
7. Apply thread locker to the bolts
8. Slip the smaller washer between the mount and the transmission while sliding the bolt in place. Thread both of these bolts in by hand, DO NOT TIGHTEN at this time.
9. At this point the cross member and mount bolts should be in place and NOT tightened. The mount to transmission bolts are FINGER TIGHT. (see fig. 1 below)
10. Tighten the transmission cross member bolts to 34 ft lbs (46 Nm)
11. Finally, tighten the 2WD transmission Mount Bolts to approximately 26 ft lbs (35 Nm)

FD Motorsports

Knightsen, CA

fdmotorsports@comcast.net

www.fdmotorsports.net



Figure 1

NOTE:

You may need to modify your front transmission cover. Don't worry, it isn't much and you can probably put it back on without changing it at all. (See fig 2 below)

Place the cover in position to determine fit with new mount. If it touches the mount, mark where the contact is occurring, remove and cut. Figure 2 shows area cut out in red.

See fig. 3 below for modified and installed cover.

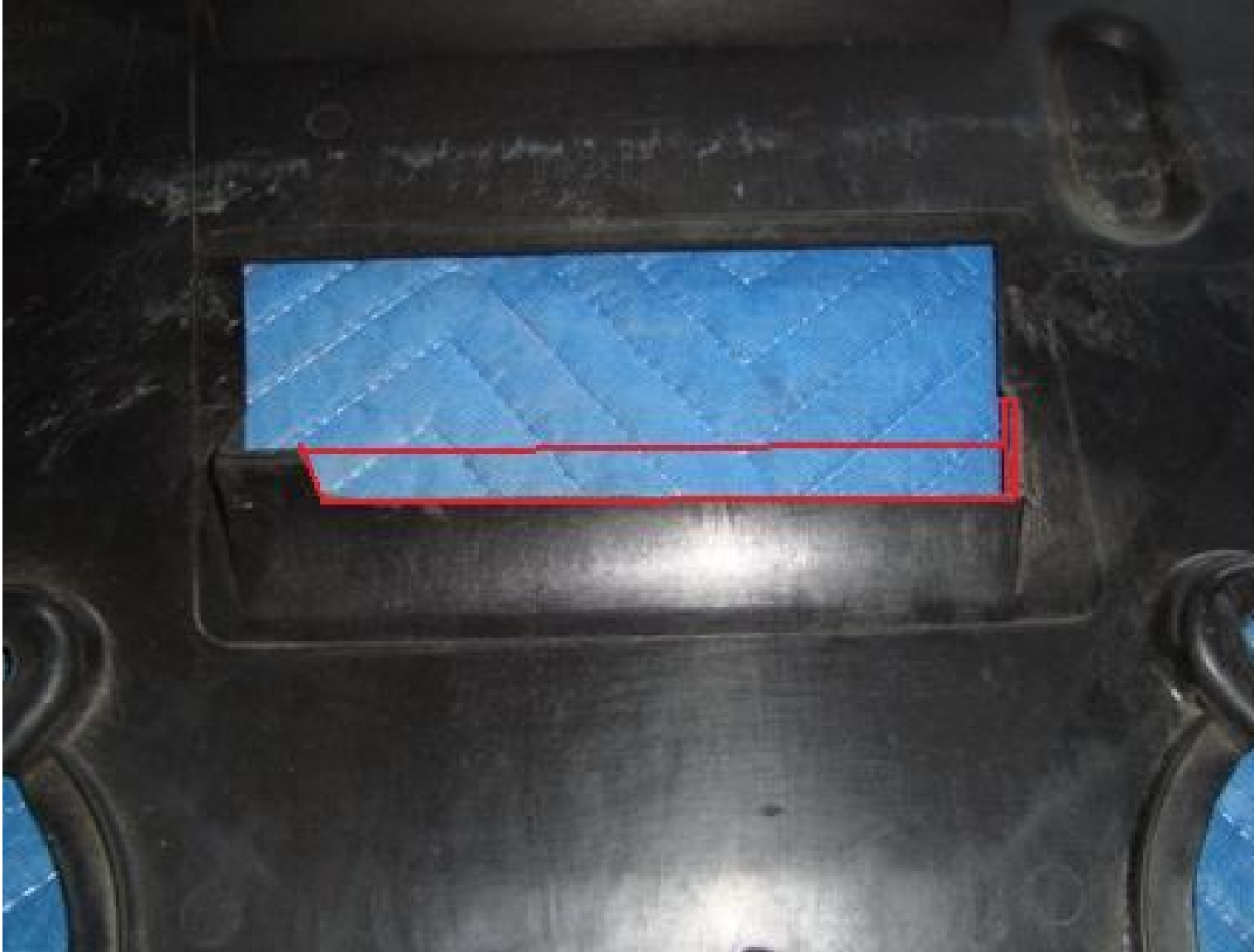


Figure 2



Figure 3